

Fantasy 6.6

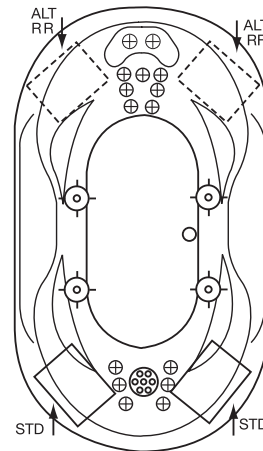
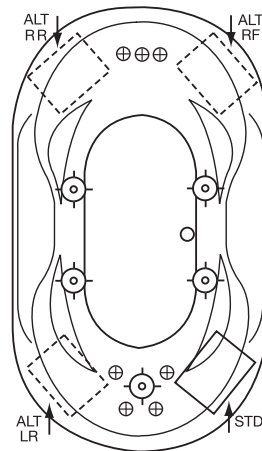
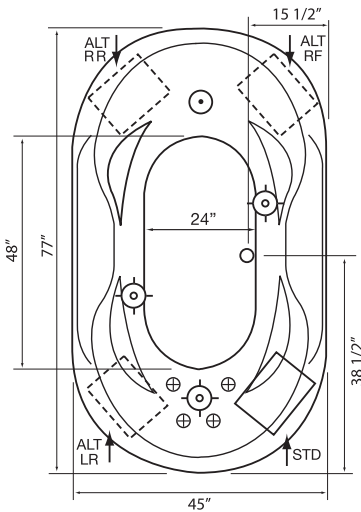
77" x 45" x 25"

Silver Series \$4495
#FS7745

Gold Series \$5295
#FG7745

Platinum Series \$7395
#FP7745

Soaking Tub \$3390
**#FTO7745



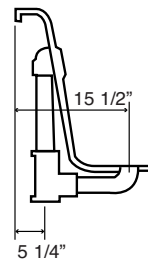
Equipment Legend

- Accu-Massage
- Micro Flow or Opt. Micromassage
- Ultra Flow or Optional Ultra Massage
- Sole Soother
- Neck Masseur Pillow
- Pump
- Alt. Pump
- Pump Access (18"x18" required)
*Some pump locations & plumbing may extend beyond perimeter of bath
- 25° Back Rest

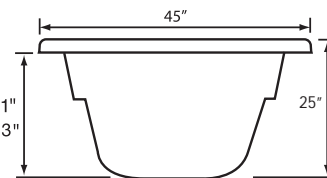
Electrical Specifications

	Silver	Gold	Platinum
Pump Requirement			
115V 15AMP w/GFCI	1		
115V 20AMP w/GFCI		1	2
Inline Heater Requirement			
115V 15AMP w/GFCI	optional	1	1
Gallons to Overflow	90 gal		
Gallons to Operate	60-90 gal		

NOTE: Specifications are $\pm 1/4"$ and features are subject to change without notice
All final measurements should be taken from tub on site



Silver/Gold 21"
Platinum 23"



Rough In Plumbing
Measurements

Features

	Silver Series	Gold Series	Platinum Series		Silver Series	Gold Series	Platinum Series
JETS				Aromatherapy Fragrance System			
Total number of jets	8	12	20	Fragrance Refills	\$195	\$195	\$195
Accu-Massage	4	7	15	Hydrocleanse Whirlpool Sys Clnr	\$16.95	\$16.95	\$16.95
Micro Flow	1	N/A	N/A	GRAB BAR	\$19.95	\$19.95	\$19.95
Micro Massage (each)	\$40	N/A	N/A	Bolt on PB, PC, SN, WH, ALM, BISC	\$125ea.	\$125ea.	1-Incl.
Ultra Flow	3	6	4	Standard Grab Bars will be color coordinated to match whirlpool			
Ultra Massage (each)	\$50	\$50	\$50	DRAIN KITS			
Sole Soother Seven (N/A in Metallic)	N/A	N/A	1	Lift N Turn PB, PC, SN, WH, ALM, BISC, ORB	\$95	Incl.	N/A
Back Masseur System	N/A	Incl.	Incl.	Deluxe Cable Drain PB, PC, SN, WH, ALM, BISC, ORB	\$250	\$250	Incl.
Neck Masseur Pillow (incl 2 jets)	N/A	\$450	Incl.	Standard drain colored to match whirlpool with ABS rough unless specified otherwise			
Metallic Trim Kit PC, PB, SN, ORB	\$250	\$350	\$400	LIGHTS			
PUMPS				Mood Light	\$195	\$195	Incl.
2.25 Hydro Power 1 speed	Incl.	N/A	N/A	Chromatherapy	\$395	\$395	\$395
2.25 Hydro Power 3 speed	\$250	N/A	N/A	PILLOW			
3.25 Hydro Power 3 speed	\$350	Incl.	2-Incl.	Deluxe Oval	\$80	Incl.	1-Incl.
Alternate Pump Location	Incl.	Incl.	Incl.	STANDARD COLORS			
Custom Pump Location(s)	180	180	180ea	White Bone Almond Biscuit	Incl.	Incl.	Incl.
HEATER				Design Colors-refer to page 5	\$495	\$495	\$495
Heater Inline/Electric	\$395	Incl.	Incl.	EZ LEVEL QUIET BASE	N/A	\$300	Incl.
Hydro Clean Sanitation System	\$495	\$495	\$495	Alters deck height. Contact factory.			
CONTROLS				EZ LEVEL BARS	\$150	\$150	N/A
Air Switch on/off	Incl.	Incl.	N/A	Rush order 72 hr manufacturing (contact factory)	\$495	\$495	\$495
Air Switch with Digital Temp Readout	N/A	N/A	Incl.	Shipping Boxes	\$90	\$90	\$90

Fantasy 6.6

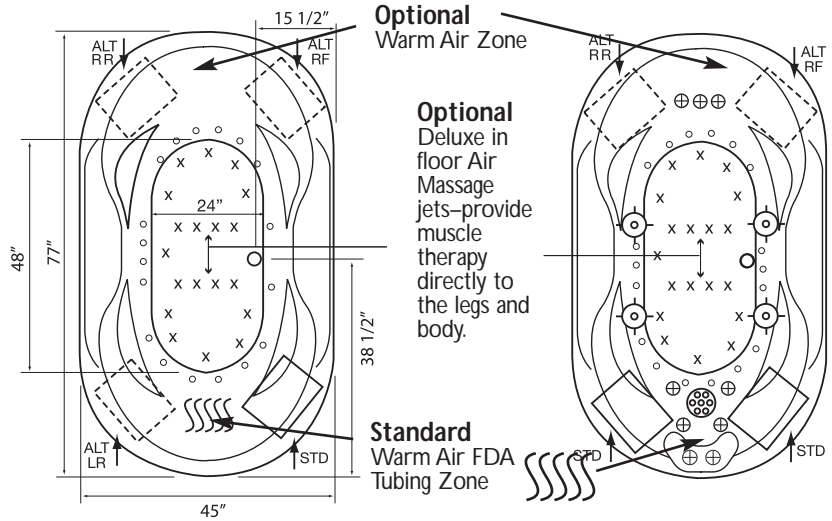
77" x 45" x 25"

Air Massage Series \$4750

#FA7745

Combination Series \$7595

#FC7745

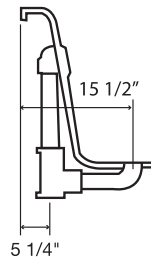


Equipment Legend

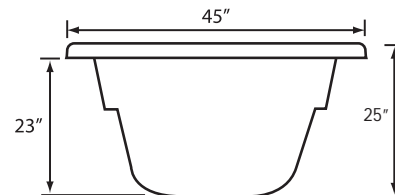
- X Optional deluxe in floor air massage jets
 - Turbo Air Jet
 - ⊕ Accu-Massage
 - Micro Flow or Optional Micromassage
 - Ultra Flow or Optional Ultra Massage
 - ⊙ Sole Soother
 - ⊕ Neck Masseur Pillow
 - Pump
 - ▭ Alt. Pump
 - Heated FDA Tubing Zone
 - SSSSS
- ➔ Pump Access (18"x18" required)
*Some pump locations & plumbing may extend beyond perimeter of bath

Electrical Specifications

	Air Massage	Combination
Pump Requirement		
115V 15AMP w/GFCI	1	1
115V 20AMP w/GFCI		1
Inline Heater Requirement		
115V 15AMP w/GFCI		1
Gallons to Overflow	90 gal	
Gallons to Operate	60-90 gal	



Rough In Plumbing Measurements



NOTE: Specifications are ± 1/4", features and prices are subject to change without notice
All final measurements should be taken from tub on site

Features

	Air Massage Series	Combination Series		Air Massage Series	Combination Series	
JETS						
Total number of jets	18	30	Aromatherapy Fragrance System	\$195	\$195	
Deluxe air systems	\$995	\$995	Fragrance Refills	\$16.95	\$16.95	
Accu-Massage	N/A	9	Hydrocleanse Whirlpool Sys Clnr	\$19.95	\$19.95	
Micro Flow	N/A	N/A	GRAB BAR			
Micro Massage	N/A	N/A	Bolt on PB, PC, SN, WH, ALM, BISC	\$125 ea.	1-Incl.	
Ultra Flow	N/A	4	Standard Grab Bars will be color coordinated to match whirlpool			
Ultra Massage (each)	N/A	\$50	DRAIN KITS			
Sole Soother Seven (N/A in Metallic)	N/A	1	Lift N Turn PB, PC, SN, WH, ALM, BISC, ORB	Incl.	N/A	
Back Masseur System	N/A	Incl.	Deluxe Cable Drain PB, PC, SN, WH,	\$250	Incl.	
Neck Masseur Pillow (incl 2 jets)	N/A	1-Incl./2nd \$450	ALM, BISC, ORB	Standard drain colored to match whirlpool with ABS rough unless specified otherwise		
Metallic Trim Kit PC, PB, SN, ORB	\$350	\$600	LIGHTS			
PUMPS						
1.25 AP variable speed	Incl.	Incl.	Mood Light	\$195	Incl.	
3.25 Hydro Power 3 speed	N/A	Incl.	Chromatherapy	\$395	\$395	
Pump Location/Alternate*	Incl.	Incl.	PILLOW			
Custom Pump Location(s)	\$180	\$180ea	Deluxe Oval	\$80	Incl.	
HEATER						
Heater Inline/Electric	N/A	Incl.	STANDARD COLORS			
HydroClean Sanitation System	N/A	\$495	White Bone Almond Biscuit	Incl.	Incl.	
CONTROLS						
Air Switch on/off water pump	N/A	Incl.	Special Colors-refer to page 5	\$495	\$495	
Electronic variable speed	Incl.	Incl.	EZ LEVEL QUIET BASE			
				Incl.	Incl.	
				Rush order 72 hour manufacturing (contact factory)	\$495	\$495
				Shipping Boxes	\$90	\$90