

# Rectangle 7248SD | Combination 21 Water & Air Massage

Product Number: BUDREC21J7248SDFS-A 72" x 48" x 25"



## STANDARD & OPTIONAL ACCESSORIES

### JETS: 21 Total Air & Water Massage Jets

- 12 Classic Air Jets
- 9 Micro Flow Water Jets

### PUMPS

- 1.25 Hydropower 1-speed Pump
- 1.0 Air Power Pump

### CONTROLS

Air Switch On/Off Control(s)

### DRAINS & OVERFLOWS INFORMATION

- Bath Drain: Pop up: Included - White
- In Floor Drain EZ Fast Connect (optional)

### FAUCET INFORMATION

- Tub Deck Mount Faucet Location
- Floor mount (not included)
- Floor mount verify spout distance

### ADDITIONAL INFORMATION

Your qualified installer must water test and run all equipment before leaving your home to ensure proper operation and validate warranty.



### TECHNICAL SPECIFICATIONS

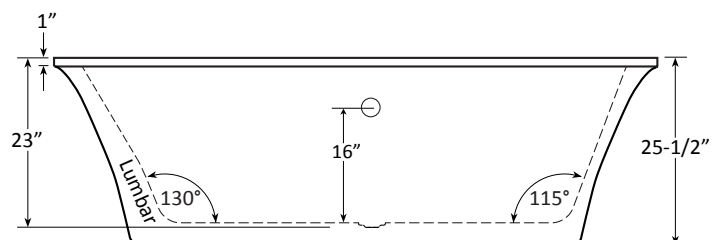
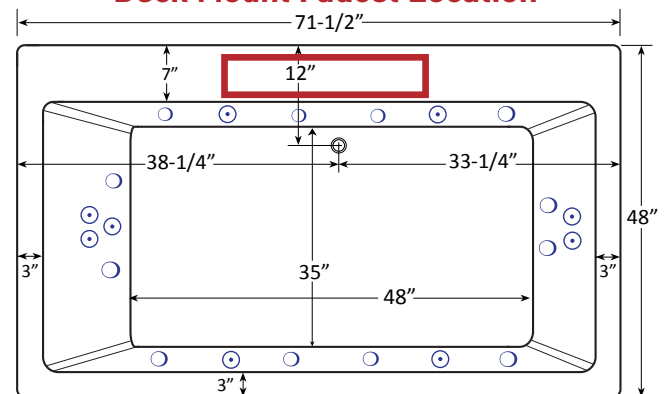
Side drain

### ELECTRICAL REQUIREMENTS

(1) 115v 20AMP GFCI Circuits



### Deck Mount Faucet Location



Specifications and features are subject to change without notice and are + .25". All final measurements should be taken from tub on site.  
HydroMassage Products LLC • 303-341-1845 • Fax: 303-341-1850 • [www.hydromassageproducts.com](http://www.hydromassageproducts.com)